






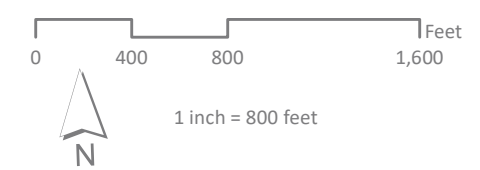
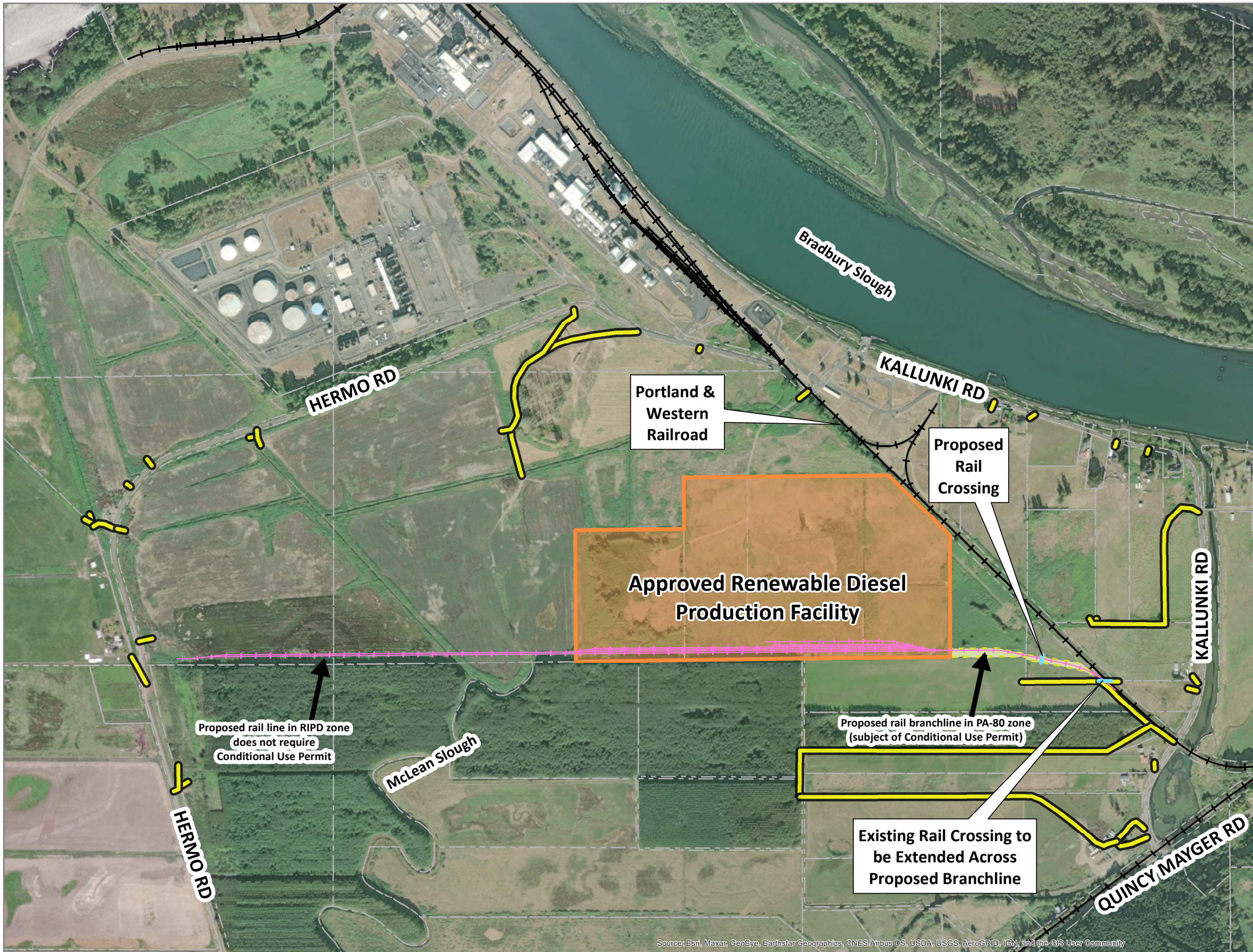


**NEXT RENEWABLE
FUELS INC.**
Columbia County, Oregon
Nearby Field Access

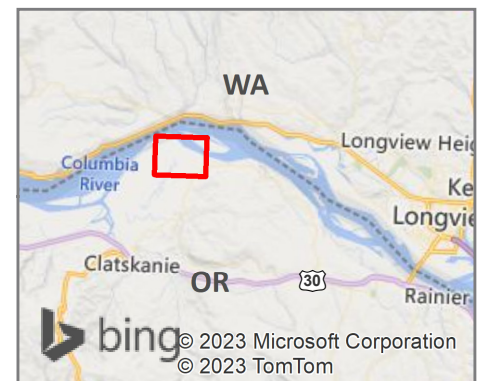
LEGEND

-  Tax Lots
-  Approved Renewable Diesel Production Facility
-  Existing Rail Mainline
-  Proposed Rail
-  Proposed Rail Corridor
-  Existing Field Access
-  Rail Crossing Alteration



SOURCE DATA: Columbia County GIS Data, Oct 2016
GEOGRAPHIC PROJECTION: NAD 83 HARN, Oregon North Lambert Conformal Conic

Date: 4/30/2023 File: FieldAccess2
Map Created By: BJV Project No: 2200315.00



MACKENZIE.

P 503.224.9560 • F 503.228.1285 • W MCKNZE.COM
RiverEast Center, 1515 SE Water Avenue, #100, Portland, OR 97214

Portland, Oregon • Vancouver, Washington • Seattle, Washington

Source: Esri, Maxar, GeoEye, Earthstar Geographics, CNES/Airbus DS, USDA, USGS, AeroGRID, IGN, and the GIS User Community